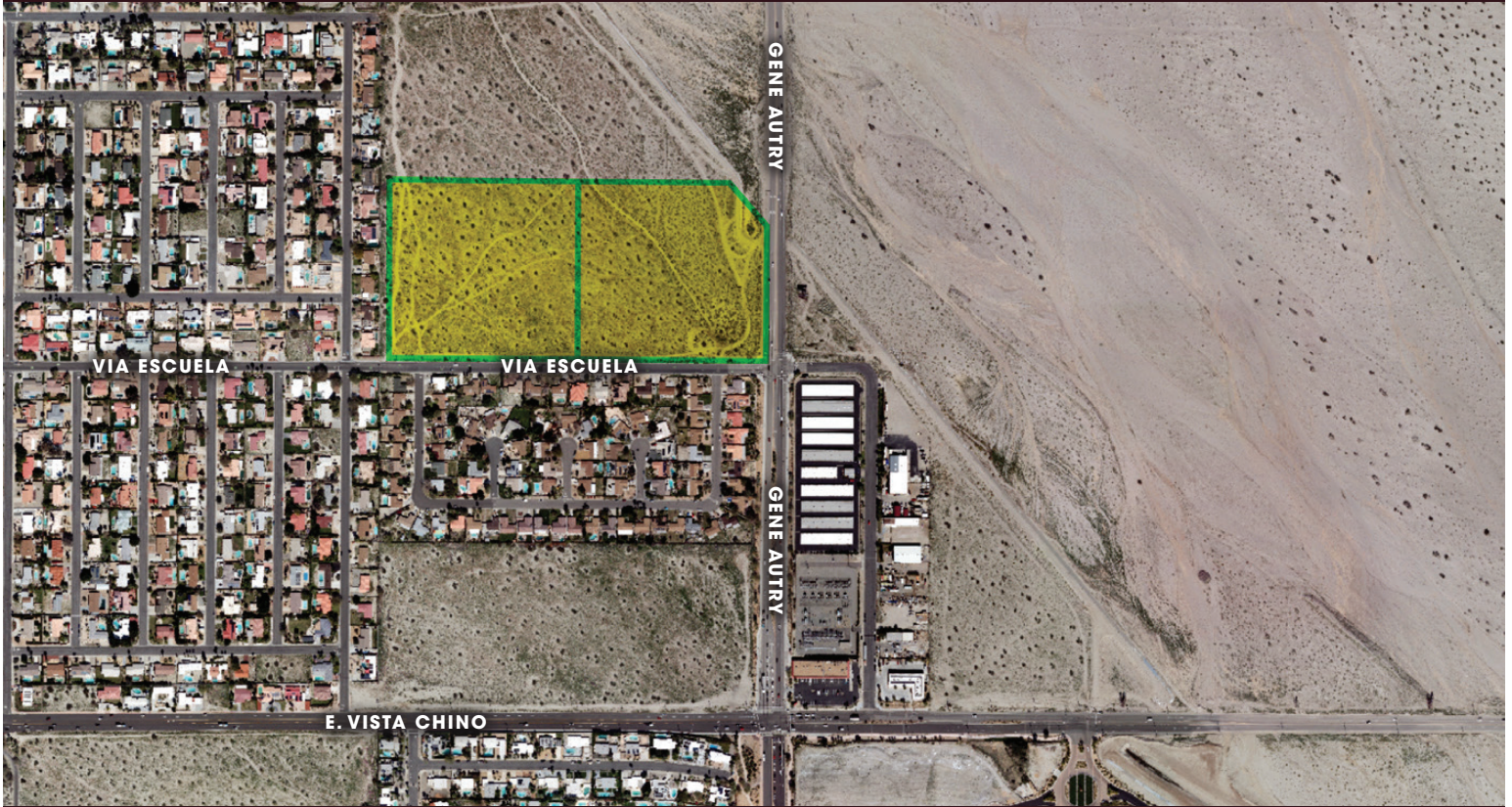


# GENE AUTRY @ VIA ESCUELA



## PROPERTY DETAILS

**PROPERTY:** Gene Autry @ Via Escuela

**CITY:** Palm Springs

**LOCATION:** NWC North Gene Autry Trail & East Via Escuela

**AREA LANDMARKS:** Escena Golf Club

**ACRES (+/-):** 21.3

**TITLE INTEREST:**

Leasehold (up to 99 years)

**LAND USE JURISDICTION:** Tribal

**GENERAL PLAN - LAND USE:** Low Density Residential (4.1-6.0 DU/AC)

**SPECIFIC PLAN/PD:** N/A

**ZONING:** R-1-D ( $\leq 6$  DU/AC)

**CONDITION:** Vacant

## CONTACT

**JEFF VATTER**

ECONOMIC DEVELOPMENT DIRECTOR

PHONE: 760-883-1338 • CELL: 760-218-1936

Email: [jvatter@aguacaliente-nsn.gov](mailto:jvatter@aguacaliente-nsn.gov)

**ANTHONY RAMIREZ**

SENIOR TRIBAL REAL ESTATE MANAGER

PHONE: 760-883-1330 • CELL: 760-250-3320

Email: [aramirez@aguacaliente-nsn.gov](mailto:aramirez@aguacaliente-nsn.gov)



**AGUA CALIENTE**  
BAND OF CAHUILLA INDIANS

5401 Dinah Shore Drive • Palm Springs, CA 92264

[www.aguacaliente.org/economic-development](http://www.aguacaliente.org/economic-development)